

How will West Bengal vote in 2021?

Election Adda 2021

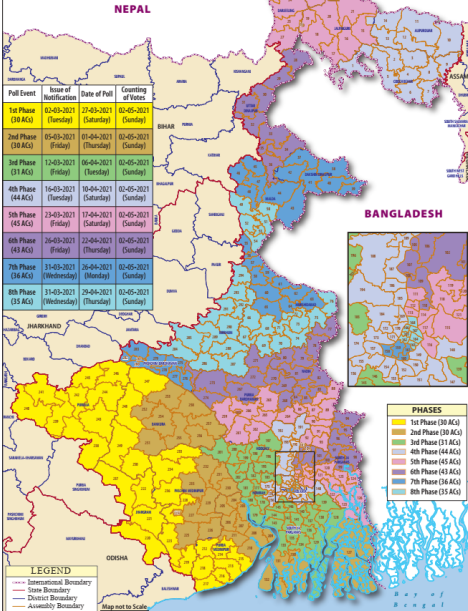
Rahul Verma

Centre for Policy Research

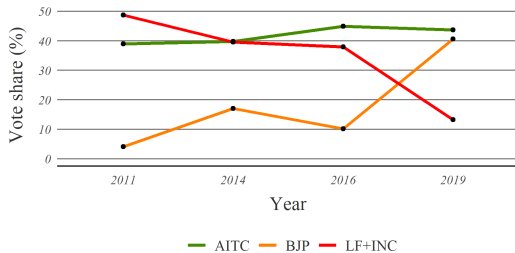
10th March, 2021



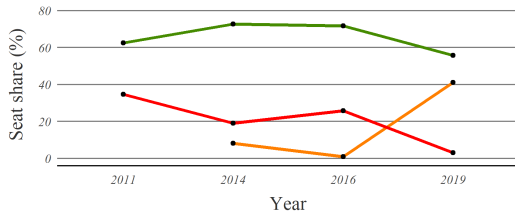
West Bengal Legislative Assembly General Elections-2021



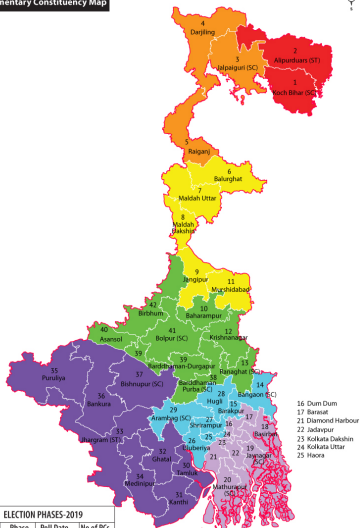
Vote share of the major parties WB 2011:19



Seat share of the major parties WB assembly segments 2011:19



WEST BENGAL
Parliamentary Constituency Map



ELECTION PHASES-2019

Phase	Poll Date	No of PCs
1 st PHASE	11 Apr 2019	2
2 nd PHASE	18 Apr 2019	3
3 rd PHASE	23 Apr 2019	5
4 th PHASE	29 Apr 2019	8
5 th PHASE	06 May 2019	7
6 th PHASE	12 May 2019	8
7 th PHASE	19 May 2019	9

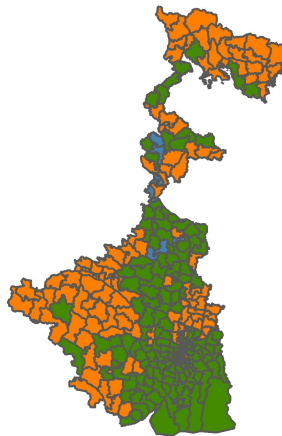
— State Boundary
— Parliamentary Boundary

Map not to Scale

Copyright © 2019 www.enactindia.com

Constituencies won by Party

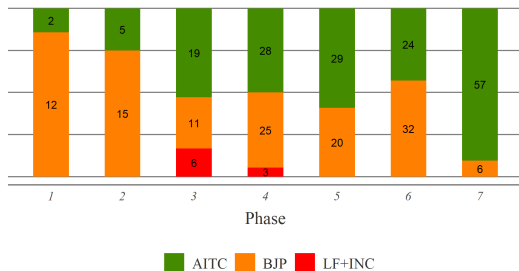
GE 2019



Party



Party Performance: Assembly Segment Seats GE 2019 Phases



Vote share of parties wrt sub region GE 2019

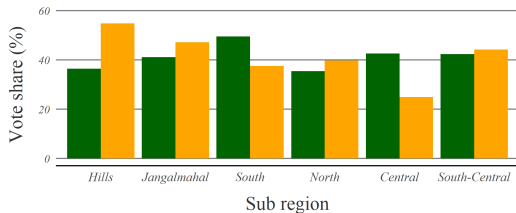
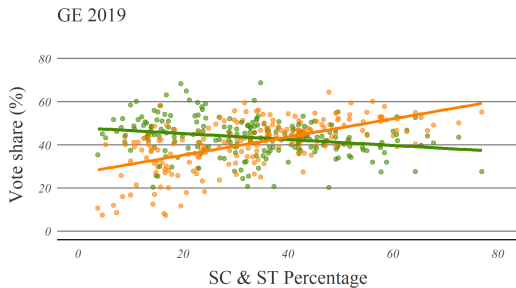
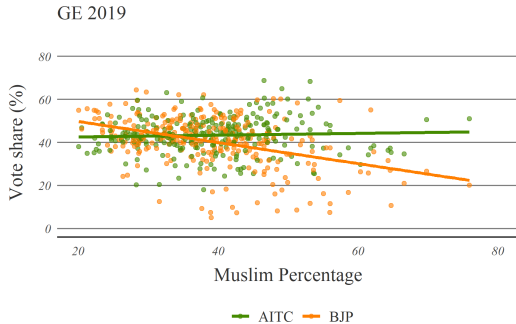


Table: Emerging Hindu-Muslim Divide in Bengal's Voting Pattern

	Vote for BJP (in %)		Vote for TMC (in %)	
	NES 2014	NES 2019	NES 2014	NES 2019
Upper Caste	24	57	38	31
OBCs	21	65	43	28
SCs	20	61	40	27
STs	11	58	40	28
Muslims	2	4	40	70

Source: NES 2014 and 2019, Lokniti-CSDS.



- West Bengal represents a new wave of religious polarisation in the country.
- Not the typical divide that has dominant caste Hindu angst at its centre, but rather lower caste Hindus.
- All cultural anxieties, political contentions, and economic angle.
- Why social identities spilling into the political realm?
- Subaltern Hindutva. differences in causes and consequences: cultural anxieties, political contentions, and economic angle.
- This election will leave a scar on nature of the social fracture in Bengal politics for a long-time.

