

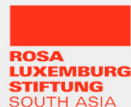
# How will Kerala vote in 2021?

Election Adda 2021

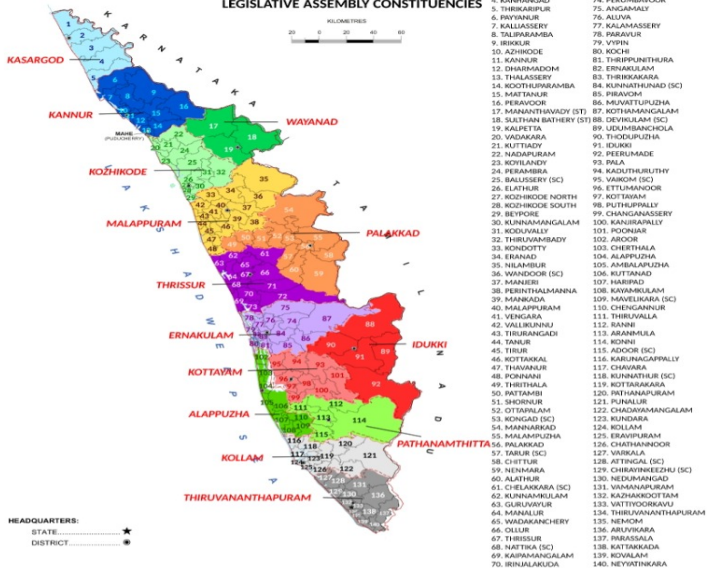
Rahul Verma

Centre for Policy Research

16th March, 2021



## KERALA LEGISLATIVE ASSEMBLY CONSTITUENCIES

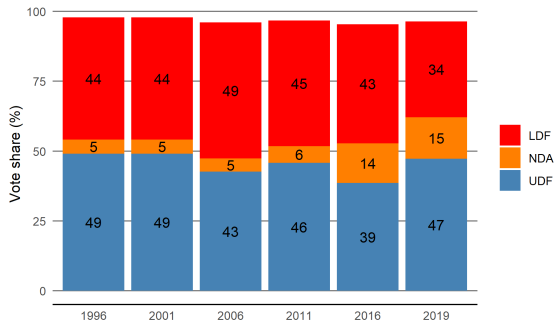


## Sub-region demographics

Sub-regions	Districts	ACs	Religion
North Kerala	Kasargod, Kannur, Wayanad, Kozhikode, Malappuram, Palakkad	60	Hindus - 50% Muslims - 44% Christians - 6%
Central Kerala	Thrissur, Ernakulam, Idukki, Kottayam	41	Hindus - 51%, Muslims - 13% Christians - 35%
South Kerala	Alappuzha, Pathanamthitta, Kollam, Thiruvananthapuram	39	Hindus - 65% Muslims - 13% Christians - 21%

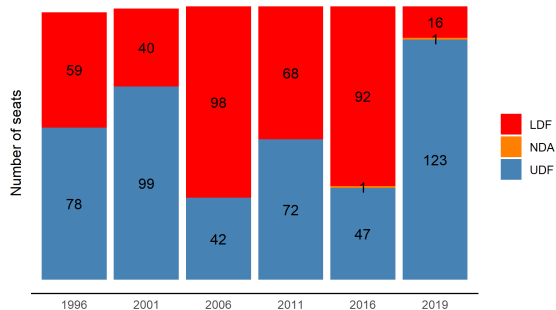
### Vote share of major fronts

1996:2019

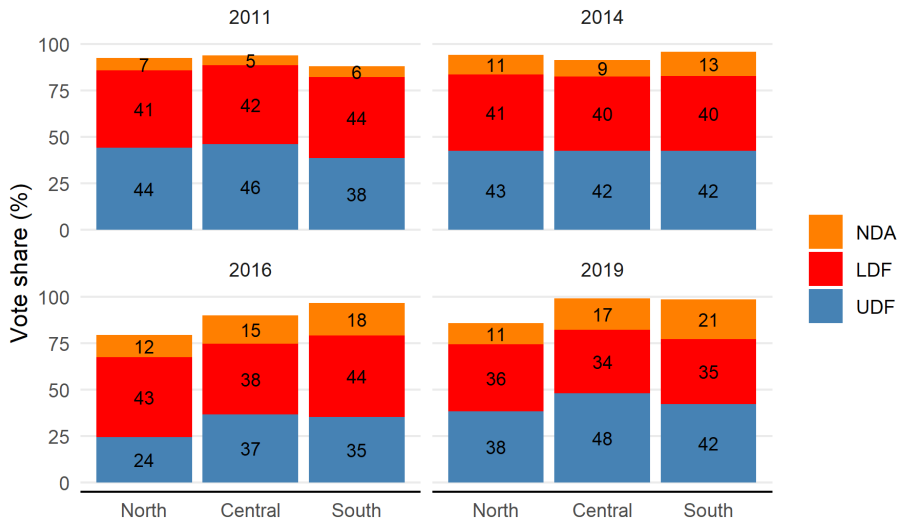


### Seat share of major fronts

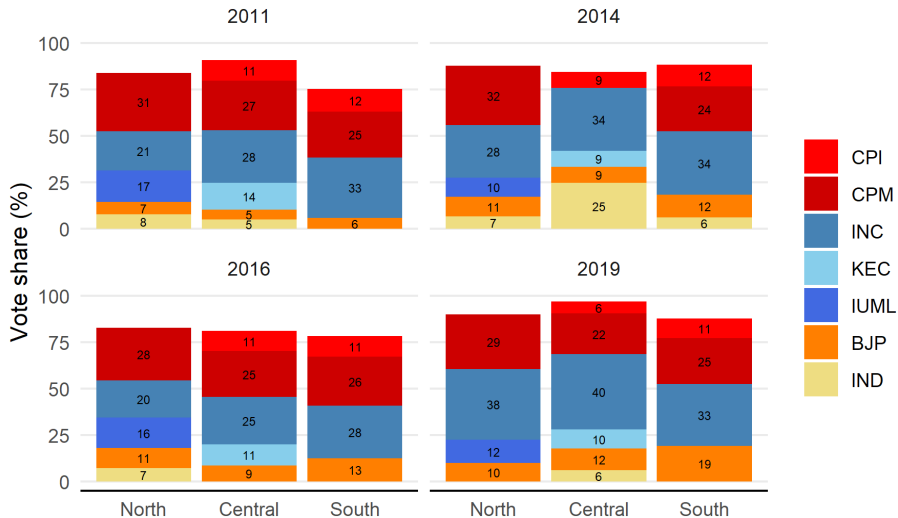
Assembly segments - 1996:2019



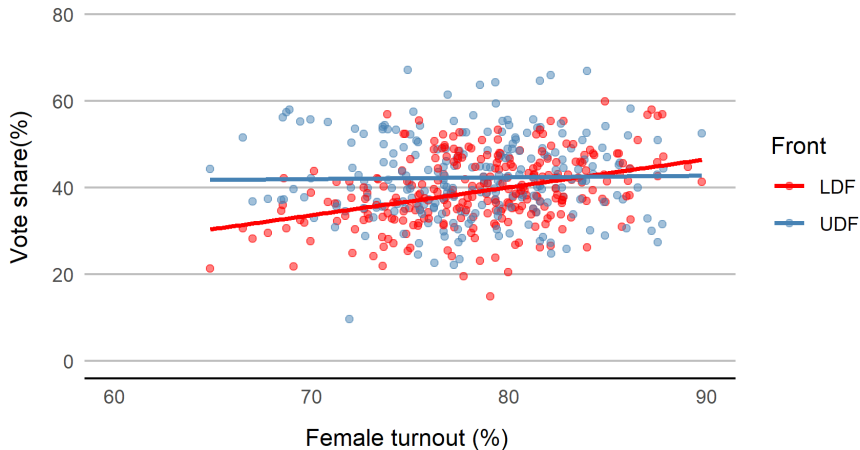
## Sub-region wise vote share of major fronts 2011:2019



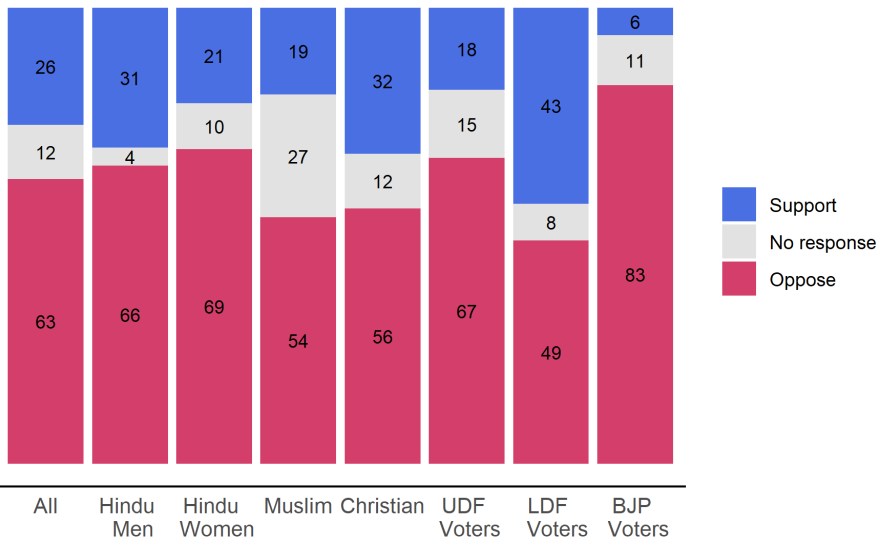
## Sub-region wise vote share of major parties 2011:2019



## Front vote share as a function of women turnout % Kerala elections - 2016 & 2019



## Opinion on the supreme court judgement on Sabarimala temple entry





<b>Caste/Community</b>	<b>UDF (%)</b>	<b>BJP (%)</b>	<b>LDF (%)</b>	<b>Others</b>
Nair	34	34	20	11
Other Upper caste	31	42	27	0
Ezhavas	28	21	45	6
Other OBC	29	18	37	16
SC	39	12	44	6
Muslim	65	2	28	4
Christian	70	2	24	5
Others	34	7	51	7

Source: Lokniti-CSDS Survey

- According to the polls, the Incumbent LDF government is set to break the record by winning a second consecutive term.
- At the same time, the negligible difference in the vote share between LDF and UDF in the recent local body election gives hope for UDF.
- This election will reveal whether BJP would rise as a formidable power in the state resulting in a tri-polar contest.